

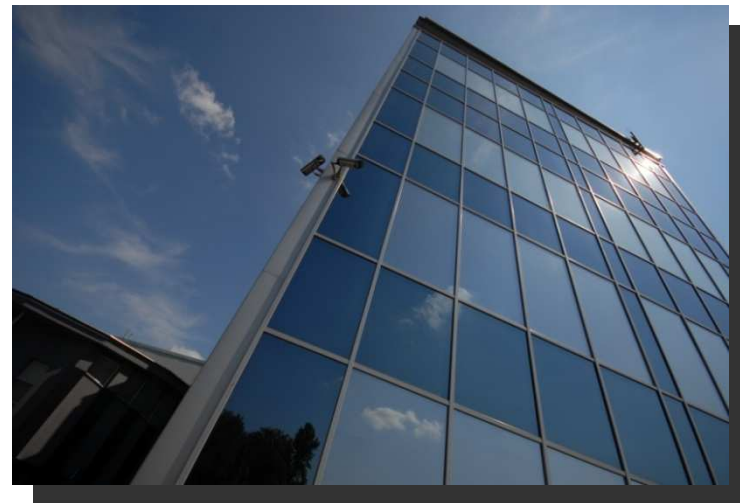


Euro - Centrum
Science and Technology Park

Live green!

Energy saving initiatives in building sector

**Jerzy Kwiatkowski,
Development Director,
18.11.2010 Brussels**



Agenda

- 1. About us**
- 2. Offer**
- 3. R+D**
- 4. Plans**
- 5. Contact**

Science and Technology Park Euro-Centrum focuses on developing energy saving technologies and energy conservation in green buildings.



Our focus:

- Heat pumps,
- Solar systems,
- Photovoltaic systems,
- Construction materials,
- IT and Building Management Systems.
- Architects and designers



Agenda

1. About us
2. Offer
3. R+D
4. Plans
5. Contact

Technology development

- Infrastructure
- Seed capital investment
- Specialistic counseling
- Thematic training
- Education



Euro-Centrum Cluster of Energy Saving Technologies

Co-operation in the construction process with more then 40 companies and R&D units



The logo for Vatra, consisting of a blue triangle above the word "Vatra" in a bold, blue, sans-serif font.

The logo for Danfoss, featuring the word "Danfoss" in a red, cursive script font.



The logo for Vaillant, featuring a small rabbit icon to the left of the word "Vaillant" in a green, sans-serif font.

The logo for LAKMA, featuring the word "LAKMA" in a bold, yellow, sans-serif font with a black outline.



The logo for VIESMANN, featuring the word "VIESMANN" in a bold, orange, sans-serif font, with the tagline "climate of innovation" below it.



The logo for Hoval, featuring the word "Hoval" in a white, sans-serif font on a red rectangular background.

The logo for VATTENFALL, featuring the word "VATTENFALL" in a bold, black, sans-serif font, with a stylized sun and wave icon to the right.

1. About us
2. Offer
- 3. R+D**
4. Plans
5. Contact

Our partners in science

- 10 Polish technology universities and institutes:



- foreign R+D units:



Fraunhofer Gesellschaft

Institute of Thermodynamics and
Thermal Process Engineering
(Stuttgart University)



SCIENCE PARK
«KYIVSKA POLITECHNIKA»

R+D

Joint research projects

1. **Optimization of energy consumption in buildings - strategic research by the National Center for Research and Development**



R+D

Joint research projects

2. **Increasing of use of renewable sources of energy in building - strategic research by the National Center for Research and Development**

R+D Energy-saving building

It uses only 1/3 energy (32 kWh/sq m/year)
in comparison to traditional office buildings

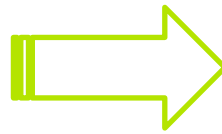
Cooperation with Weiz Energie-Innovations
Zentrum



R+D

Joint research projects

3. Measurement of basic meteorological data



1. About us
2. Offer
3. R+D
- 4. Plans**
5. Contact

Development of Science and Technology Park. Construction of new passive office building for laboratories. New R&D, training and consultancy services.



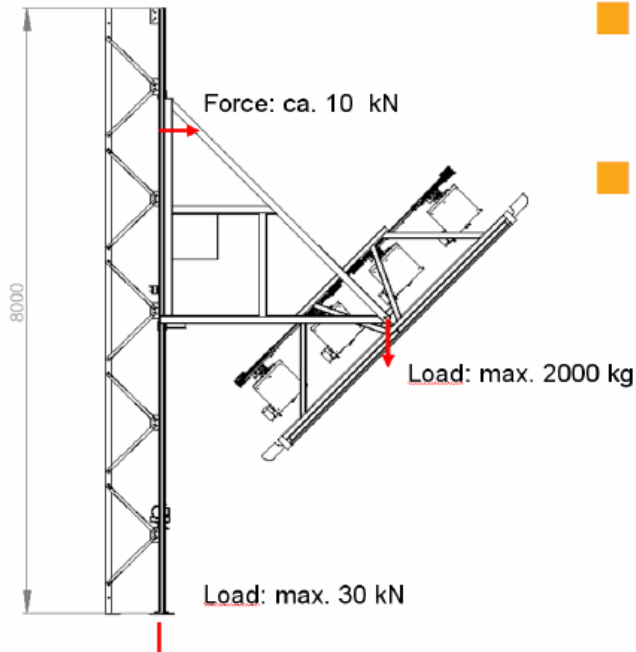
Technologies to be used:

- Solar collectors and solar cells,
- systems of geothermal probes ,
- heat pump,
- passive windows,
- heat recovery ventilation,
- indoor window blinds,
- BKT ceilings

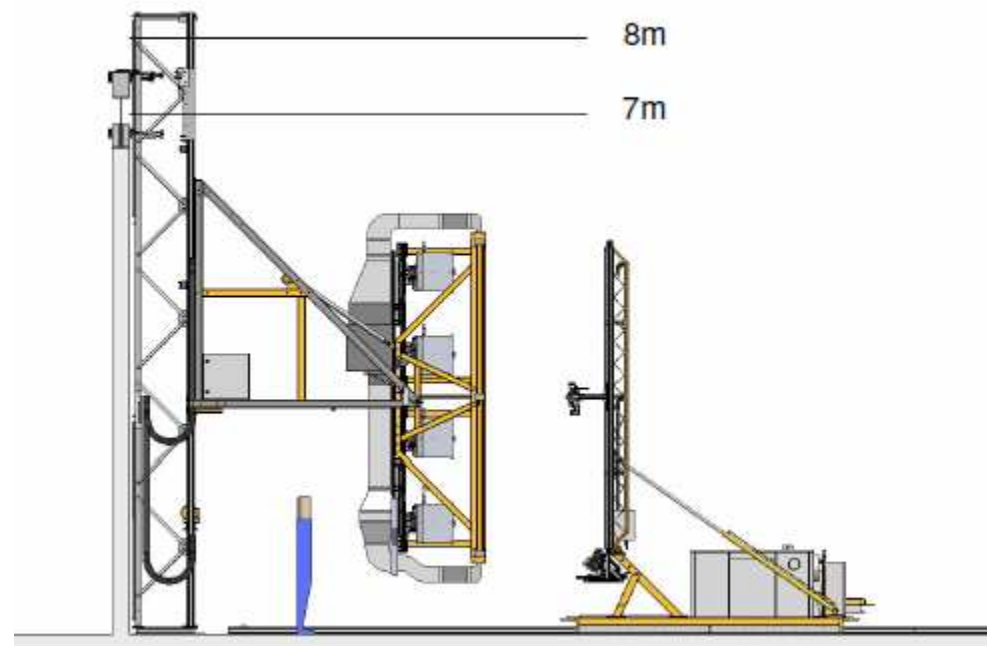
Space - 6 335 sq m

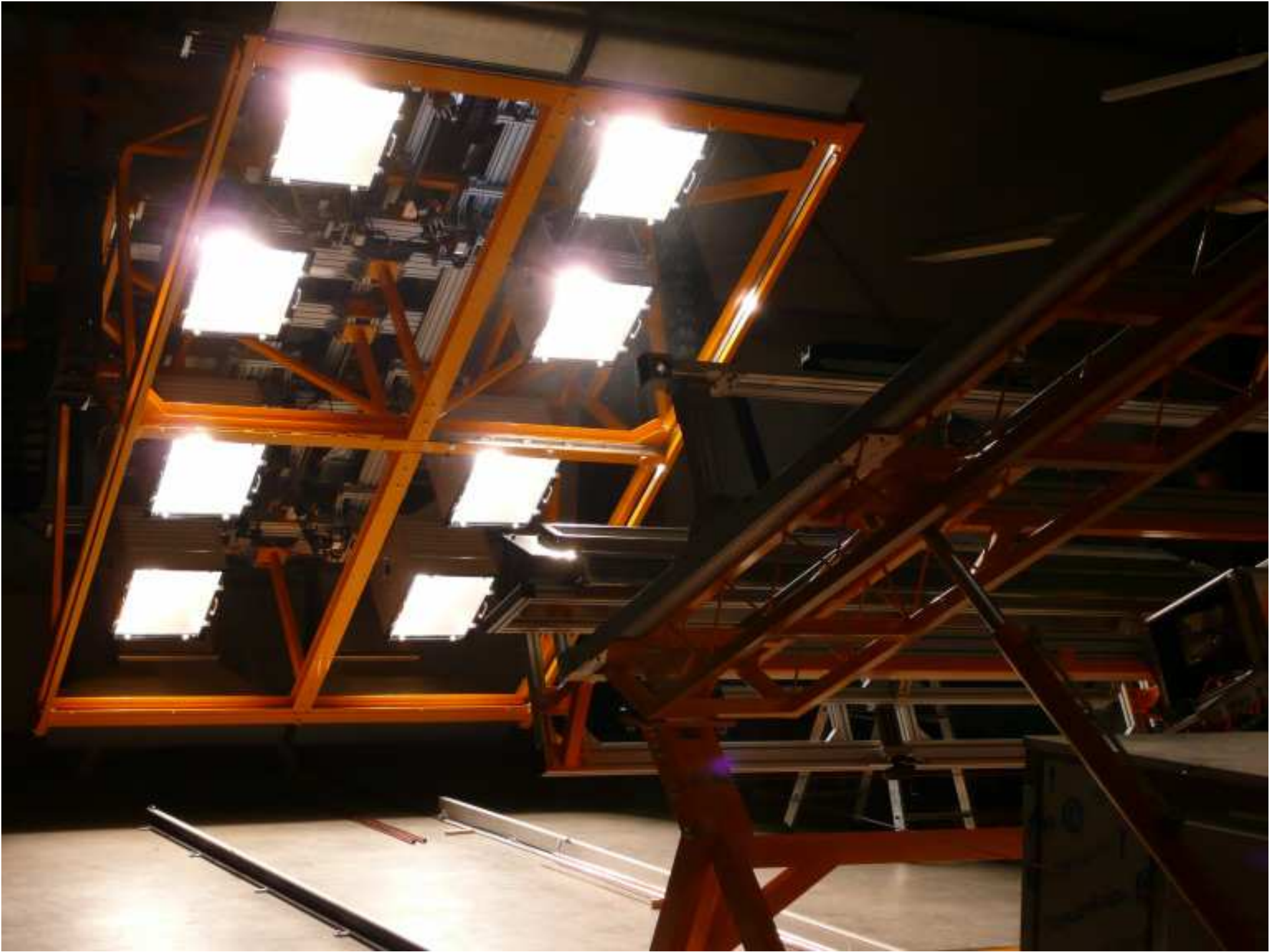
Co-operation with professor Walter Brown, an author of the biggest European passive office building (11 250 sq m)

Indoor test stands for the testing of solar thermal collectors



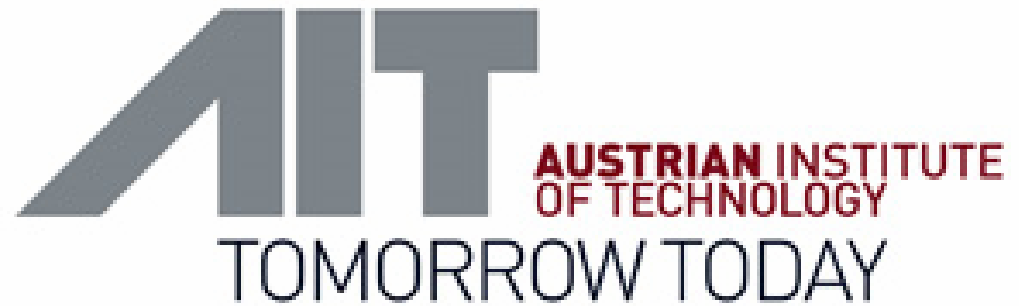
Co-operation with PSE AG
Institute in Freiburg





Advanced Trainings

**Modern Heating
Technologies Center -**
co-operation with
Austrian Institute of
Technology



1. Training programme for heat pumps installers
2. Training programme for solar system installers
3. Training programme designers and installers of ventilation systems

Science and Technology Park Euro-Centrum Ltd.

tel. 00 48 32 205 00 92

fax 00 48 32 250 47 85

kontakt@euro-centrum.com.pl

ul. Ligocka 103

40-568 Katowice, Poland

www.euro-centrum.com.pl